

# Blandfordia



North Shore Group  
(ABN 87 002 680 408)

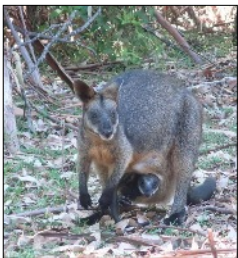
April 2021

## Walks and Talks at the Ku-ring-gai Wildflower Garden St Ives

**Modified outdoor activity held within restrictions imposed due to Covid-19**

10 am Monday 19<sup>th</sup> April 2021 Wildlife of Ku-ring-gai Wildflower Garden, a guided walk

This walk will explore the various habitats that support the native animals that abound in Ku-ring-gai Wildflower Garden.



Swamp wallabies, echidnas, goannas, brush turkeys, eastern whipbirds and in the pond area, water dragons, red-bellied black snakes, long-necked turtles and frogs are just a sample of the fauna you may encounter.

Many of our marsupial animals are nocturnal so Glenda and Jenny will describe the types of habitat that are likely to be home to species of possums and gliders that use KWG and show the signs of the gliders feeding in the native gum trees.



Walk Only: Focused on natural historic aspects of Ku-ring-gai Wildflower Garden.

Leaders Glenda and Jenny are both members of APS NSG with a special interest in the care and rescue of native wildlife.

- Walk is easy-medium. Session will run 10 am to about 12 noon.
- Please wear a hat, have suitable footwear and bring water.
- Sunscreen and insect repellent would also be a good idea



### Bookings are essential.

Please email [wagrimm@tpg.com.au](mailto:wagrimm@tpg.com.au) (preferred) or ring Wendy 0419 323 035

Please provide 1) your name, 2) mobile number and 3) the number of a person who could be contacted in the case of an emergency.

We will continue to enjoy our wonderful native plants as they come into flower across the year.

The next walk is planned for **24<sup>th</sup> May**. The full programme of walks and/ or talks for the year 2021 has been planned, but activities will only be advertised on a monthly basis until covid restrictions are known with more certainty.

Walks & Talks Convener *Wendy Grimm*

### Photos

*Swamp wallaby with joey in pouch at Lamberts Clearing*

*Pygmy possum sleeping out and vulnerable to dogs on Showground Trail.*

*Echidna along Bobbin Head Trail, North Turramurra*

*Dwarf tree frog, (Litoria fallax) KWG*

*Red-crowned toadlet metamorph, (Pseudophryne australis) KWG*



## Taking Photos of Plants 9<sup>th</sup> March 2021

Many thanks to David Roberts for a most informative talk.

First point: **Why am I taking this photo?** Is it for a “Brag sheet” (image for yourself &/or others) or for identification of a plant or for records of growth, location etc.

Depending on your response how you take the photo and what conditions are optimal will vary greatly.

### Equipment **What you have!**

Options include

- Digital SLR used on manual mode, not automatic mode. Macro lenses are available. A short depth of field results. This means that not all the photo will be in sharp focus.
- Tripods- these can be used to hold the camera or to hold a shade or lighting device or to stabilise a plant.
- Smart phones. Best on automatic setting. Portable and increasingly producing high quality images.
- Compact digital camera. These may have the ability to tilt the screen. These are becoming increasing harder to purchase.

### Lighting

Best conditions are usually in the early morning.

Shade will often create better results, especially if conditions are too bright. (A straw hat will often suffice and create a softening effect). Perhaps move to another position around the plant.

### Framing

What is in the photo is not the same as we see with our eyes. It can be useful to use a finger frame to visualise the final photo. David commented that our eyes adjust better to horizontal planes than vertical planes and when looking at a photo our eyes tend to follow the horizontal lines out of the photo. This makes it more difficult to create a better and more acceptable vertical photo.

### Composition

For “brag sheet” photos the rule of thirds usually applies. That is, the frame area of the photo is divided into thirds, both in vertical and horizontal planes. The sites to position the main foci of the photo are where the lines intersect. If taking a landscape photo usually 1/3 of the photo is either the sky or the land. A 50:50 division is not pleasing to the eye.

Making sure that the horizon is level usually helps.

A composition with 3 foci of attention also tends to be more appealing.

For identification of plants the rule of thirds does NOT apply. In these photos concentrate on the subject and the best point of focus is at the centre of the frame. Sometimes multiple images are required to get the different parts of the plant in focus.

Time and date are often very useful facts to include.

### Colours

On the colour spectrum the human eye is best adapted to red, green and blue. The eye can see the subtleties of green compared with what a camera can detect. Photos of the Australian bush often are disappointing due to this phenomenon. David commented that photos taken after a little shower of rain and then sun will often generate a much better outcome. If it is too light/ sunny the subtlety of greens will decrease resulting in a blurry effect in the photo. Yellow is not seen by the human eye, so cameras do better. By contrast, reds are perceived better by the eye compared with the camera, so it is often hard to get photos of red flowers with good definition.

For identification of plants separate out the leaves, bark and fruit and take different photos of each part. Place the structure in the centre of the frame, in shade and with a background which is creating a good contrast. It is often helpful to use something as a comparison e.g. a foot, pencil, gardening glove. David also keeps a paper ruler (readily available on internet) with his gear.

A few questions were then addressed.

(1) *How to photograph red flowers successfully?* David suggested putting the focal zone on the red, using a spot meter for determining the exposure and putting the flower in shade.

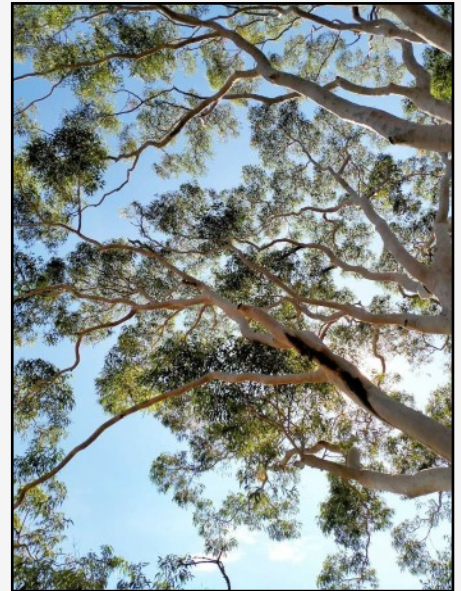
(2) *How do you manage in windy conditions?* (i) Increase the shutter speed on the camera/ anchor that part of plant by attaching it to a tripod or an adjacent immobile structure.

(ii) Wendy Grimm has had success by using a small forked stick on the stem to hold a plant when she is photographing small low growing plants and flowers.

David finished up with some “pearls” of advice- have your camera with you, be patient, take more photos and enjoy them.

*Written by Jan Williamson*

Recently, while watching a grandson playing cricket I looked up while sitting in the shade of this beautiful eucalypt & thought to pull out my phone and use the camera!



## **Group Walk for April on Saturday 10<sup>th</sup> April**

### **Ku-ring-gai Wildflower Garden to St Ives Showground**

The track joining the Wildflower Garden to the Showground has only been made more accessible for walking relatively recently. It's most interesting feature is that it passes through Duffys Forest Endangered Ecological Community. There are also good patches of plants of the Ericaceae Family. It is an easy amble along firetrail grade track, mostly fairly flat with just one gradual rise. It can be a bit wet underfoot with some puddles to skirt around. The wider track makes it good for Covid distancing.

We'll be adding to an existing plant list, so it's a good opportunity to improve your native plant knowledge. After the walk, people may like to stay on for lunch near Caley's Pavilion. Then there is the possibility of a further short amble to see anything particularly botanically interesting that we've heard about.

**When: Saturday 10<sup>th</sup> April at 10am**

**Where: Caley's Pavilion, Ku-ring-gai Wildflower Garden**

**What to bring: Essential-** Good walking shoes, hat, sunscreen, water, snack. **Optional:** dry shoes to change into later, insect repellent, plant id book, wet weather gear/umbrella, walking pole(s), lunch.

**Contact person: Sue Fredrickson phone 0401 362 921**

Please register beforehand, by the day before by emailing [paulandsuefreddo@bigpond.com](mailto:paulandsuefreddo@bigpond.com) and give your name, phone number, emergency contact person's phone number and car registration number if coming by car. Please ring and check that the walk will go ahead if the weather looks awful- (more likely to be rain than hot temperatures at this time of the year).



## President's Message

March has certainly been a busy month.



Our first plant sale at our KWG shadehouse was very successful on Saturday 13<sup>th</sup>, making more than \$2000. The combination of Covid restrictions and very limited parking meant that attendance had to be by booking only, which worked well. We were very pleased to see so many people using the plant list that was sent out before the sale to identify the plants that they wanted. A big thank you to Jan W, Genevieve, Tania, Sue F, Wendy and Helen for helping on the day and a special thank you to Judy J for weeding the shadehouse and washing pebbles. The propagation team also worked tirelessly to organise and label the plants.

We had hoped that the shade cloth would be replaced on the shadehouse last week but the wet weather has delayed this work.

I had the pleasure of handing the newly engraved Melba Dyer award to Jan Marshall at the Wildflower display at KWG on Wednesday 23<sup>rd</sup>.

The Knoll group had a very successful planting session on Friday 26<sup>th</sup>, planting out more than 60 new plants. The next step will be to place new name labels next to the plants.

With Covid restrictions easing further and vaccinations commencing, your Committee has decided to hold our first face to face monthly meeting at Beatrice Taylor Hall in May. At this stage attendance will be by booking (to meet Covid requirements) but things may be different by the time that our May *Blandfordia* is distributed.

*Sue Bowen*



### SILENT AUCTION

Joanne Foley has most kindly donated this beautiful table to the group as a fund raiser.

If you wish to make an offer please contact Sue Bowen on [suzannebowen@gmail.com](mailto:suzannebowen@gmail.com) or 0478 957 951 by Friday 9<sup>th</sup> April.

It features an inlaid mosaic of flannel flowers in an occasional table with a wrought iron base & wrought iron legs, 60cm diam & 72cm high.



# APS NSG Events in April 2021

## 9<sup>th</sup> April Meeting

7.45pm for 8pm start on  
**Zoom platform.**

*Speaker:* **David Bambridge**  
(The Garden Makers)

*Topic:* **Going Native in the Urban  
Landscape- Creeks to Casinos**

*Background:* A discussion of soils, plants and their installation issues in the modern urban landscape context where the project delivery factors such as time, budget, competing consultants, weather and seasonal cycles come into play.



The talk will range over soils for purpose, plant selection issues, procurement and installation as well as the care and maintenance of landscapes post completion to achieve an established urban landscape somewhat resembling the design intent.

Sites discussed will include

- Rooftop gardens in Sydney CBD
- High rise residential.
- City Street Trees
- Restoration to creek lines in urban riparian areas.

### **The Knoll 9<sup>th</sup> April**

At 10 am the official unveiling of the plaque in memory of Alec Fisher and his contribution to The Knoll will be unveiled. All welcome. There will morning tea afterwards (BYO).

**Propagation** at KWG Wednesday 7<sup>th</sup> & 21<sup>st</sup> April  
5<sup>th</sup> & 19<sup>th</sup> May *Contact:* Tania Lamble 0415 043 671

**Bushcare** at KWG 14<sup>th</sup> & 28<sup>th</sup> April 12<sup>th</sup> & 26<sup>th</sup> May  
*Contact:* Sue Bowen 0478 957 951

**The Knoll** 9<sup>th</sup> & 23<sup>rd</sup> April 14<sup>th</sup> & 28<sup>th</sup> May  
*Contact:* Michael Griffith  
[michaelgriffith1@gmail.com](mailto:michaelgriffith1@gmail.com)

**Group walk** KWG Saturday 10<sup>th</sup> April see page 3

**Next meeting 14<sup>th</sup> MAY**

**Face to face at Beatrice Taylor Hall Hornsby**

**Speaker Bruce Usher Topic coast tree street**





**March Committee meeting notes** (virtual zoom meeting)

The following items were discussed:

- Returning to face to face meetings
- Shade house at KWG - pathway completed and further renovations will occur after 22<sup>nd</sup> March.
- Plant sale on 13<sup>th</sup> March was very successful
- Speakers' Programme 2021
- APS NSW Delegate report
- "APS NSG: A History Part 1, 1958 to 1980" by Bush, Doig and Neilsen (2003) has been scanned and will be uploaded to the APS NSG section of the APS NSW website. (TBA)
- Donation of decorative table by Joanne Foley



## New Members

A big welcome to new members Karissa H, Jonathan L, Shubham C, Alissa C, Christine S, Laurent S and Jenney X. We look forward to meeting you and sharing with you our interest in and knowledge of Australian native plants.

### Excellent resource for identifying and finding Australian native plants *Jeff Howes*

There are currently approximately 500 plants in the Resource section of the APS NSW web site and a lot more still to be added.  
<https://resources.austplants.com.au/plant-database/>

Use the search and filtering features in the table below to find plants of interest and then click on a plant's **Image** or **Title** to view plant details.

Please note that the table of plants can be alphabetised by clicking on the heading at the top of each column.

Also, any plants such as cultivars that use inverted commas e.g. *Banksia* 'Giant Candles', appear **after** those without any inverted commas, such as *Banksia robur*.

Another source of quality native plants.

Brian Roach Westleigh Native Plants [westleighnativeplants@gmail.com](mailto:westleighnativeplants@gmail.com)

### Committee Contacts

**President:** Sue Bowen 0478 957 951

**Secretary:** Judy Jeffery 0429 438 598

Email: [secretary@blandfordia.org.au](mailto:secretary@blandfordia.org.au)

**Website:** <https://austplants.com.au/North-Shore>

**The preferred method for Membership Applications & Renewals is to go to the APS NSW website and follow the instructions at**  
<https://austplants.com.au/about-membership>

If joining or renewing online presents any problems assistance can be given by emailing your query to  
[membership@blandfordia.org.au](mailto:membership@blandfordia.org.au)

For your convenience, an EFT payment option is now available.

**Treasurer:** Helen Ray [treasurer@blandfordia.org.au](mailto:treasurer@blandfordia.org.au)

**Newsletter Editor:** Jan Williamson 9875 2262 [janw7531@gmail.com](mailto:janw7531@gmail.com)

**Newsletter submissions:** Deadline for submissions is the third Friday of the month.

For the May 2021 edition this will be 16<sup>th</sup> April 2021 Editor: [janw7531@gmail.com](mailto:janw7531@gmail.com)

***Blandfordia*** *The Newsletter of the Australian Plants Society North Shore Group*