

# Blandfordia



North Shore Group  
(ABN 87 002 680 408)

MARCH 2023

## APSNSG Treasurer's Report for 2022

In 2022, the North Shore Group had income of \$9071 and expenditure of \$9144 resulting in a small net loss of \$73.09, an improvement on 2021. The total value of our bank and investment accounts at the end of 2022 was \$89,091, a decrease of less than 1%.

This year our activities were less impacted by the COVID pandemic than in the previous two years. Again there was no Wildflower Festival but we held a spring plant sale and a couple of smaller community plant sales. We had \$5478 in takings from these sales, and \$1301 takings from other plant sales by the propagation group. Takings from plant sales at our monthly meetings remained lower than usual at \$310 due to several meetings being online.

### Significant income included:

Spring plant sale.....	\$4429
Membership (net).....	\$1535
Propagation – plant sales from shadehouse .....	\$1301
Meetings – plant sales .....	\$310
Donations.....	\$250

This year we awarded a \$3500 scholarship for research into Australian native plants. Our other major expenses were \$1641 for a new laptop, projector and accessories, and \$1909 for plants for the shadehouse and sales.

Work on refreshing the knoll cost \$659.

### Significant expenditure included:

Scholarship.....	\$3500
Propagation plants.....	\$1909
Meeting supplies.....	\$1671
Knoll materials & plants.....	\$659
Propagation materials.....	\$475

*Helen Ray, Treasurer*

A **huge** thanks once again to Helen for all her diligent work as treasurer and supporter of the group in so many ways over several years.

## Next APS NSG General Meeting

Friday 10<sup>th</sup> MARCH 2023  
7.30 pm for 8pm

at Beatrice Taylor Hall, Willow Park Community Centre 25 Edgeworth David Ave, Hornsby

Speaker: **Brian Roach**

Topic: **Beside the seaside**

Background: Brian has a long experience of propagating a diverse range of native plants.

In this talk he will share an amazing new development with the dwarf Christmas Bush, *Ceratopetalum gummiferum*, along with information about an exciting new banksia, *Banksia vincentia*, which is critically endangered on the shores of Jervis Bay. The good news is that it is extremely easy to propagate.



Brian will address the question: "to what extent do seaside conditions such as wind and salt spray possibly change the genetics of a plant such as *Ceratopetalum gummiferum*" ?

14 April Speaker: **Karen Benhar** Topic: **Local Stewardship Creates Habitat**

Thanks to Jonathan Lidbetter and East Coast Wildflowers for the donation of a tray of flannel flower *Actinotus helianthi* seedlings that he recently gave us. The propagation group has tubed up hundreds of seedlings. He also gave us some blue flowered laceflowers, *Trachymene coeruleas*, an annual that we potted up and gave away at the February meeting. Sue Bowen



Jan W

### ***HELP still required for 2023 committee***

The following positions are currently unfilled. Your assistance is required. The committee meets once a month via zoom and meetings last for a maximum of 2 hours. Full job descriptions are available.

**Correspondence secretary:** mainly filtering incoming correspondence, few outgoing correspondence.

**Excursions coordinator for garden visits:** maximum of 2-3 visits a year

**Publicity Officer:** contacting APS NSW for enewsletter, local papers etc

**Conservation Officer:** taking an interest in local projects that may involve input from the group on conservation grounds

**Health & Safety Officer:** liaising within group. APS NSW is establishing guidelines and support for all groups.

For more information contact Sue Bowen 0478 957 951 or [northshore@austplants.com.au](mailto:northshore@austplants.com.au)

## Monday Walks & Talks will recommence in March 2023 at

### Ku-ring-gai Wildflower Garden (KWG), 420 Mona Vale Road, St Ives

Be guided by members of the North Shore Group of the Australian Plants Society on a walk in the Ku-ring-gai Wildflower Garden to see and learn about our wonderful native plants as they come into flower.

These sessions are free. No prior knowledge is required. Information sheets will be provided.

Meet at **9.45 am** at Caley's Patio (behind Caley's Pavilion) in KWG. No booking necessary.

Enquiries: Wendy: [wendyagrimm@gmail.com](mailto:wendyagrimm@gmail.com) or 0419 323 035

Walks are easy/medium. Sessions run 10am to about 12 noon.

Please wear a hat, have suitable footwear and carry water/snack.

Sunscreen and insect repellent would also be a good idea.

**Date: Monday March 13<sup>th</sup>**

**Topic: Introduction to the Walk and Talk programme in Ku-ring-gai Wildflower Garden**

**Leader: Jan Marshall**

A guided walk starting in Caley's Garden at 10am

In this walk, we will look at the habitats and environment in which plants and animals thrive.

All the major plant families Proteaceae, Fabaceae, Rutaceae, Ericaceae, and Myrtaceae (not shown) and many of the other families grow in Ku-ring-gai Wildflower Garden. Hopefully we will find many samples to look at from Gum trees, to Grasses and Insects to Birds.

Wendy Grimm

**April 17 Monday Bush foods & fibres** Leader: **Wendy** (Please note 17.4.23 falls during school holidays)

**May 15 Monday Insects & inspiration** Leader: **Margo**

Photos taken in mid January on Hassans Walls, Lithgow, by Sue Fredrickson on a wander.



*Mitrasacme polymorpha*



*Ozothamnus diasmifolius*



## The Knoll : our NSG Native Plant Community Garden

The plan to establish The Knoll Garden as an APS NSG Native Plant Community Garden was launched at the Annual General Meeting last month. I was overwhelmed by the support offered at the meeting by 4 new recruits and we took advantage of favourable weather on Friday 17<sup>th</sup> February to get started. David, Inge and Judy were shown around The Knoll and especially the plots that they had chosen to maintain. Each person will to be responsible for selection of new native plants to grow in their plots, within a framework acceptable at Ku-ring-gai Wildflower Garden, which is a Ku-ring-gai Council managed flora and fauna reserve on Crown Land.

There are still seven plots available for members to select (beds 1a, 1b, 2c, 2d, 3c, 5a, 5b on map). Please contact me if you would like to find out more about gardening at The Knoll.

Wendy Grimm, The Knoll coordinator [wendyagrimm@gmail.com](mailto:wendyagrimm@gmail.com) or 0419 323 035



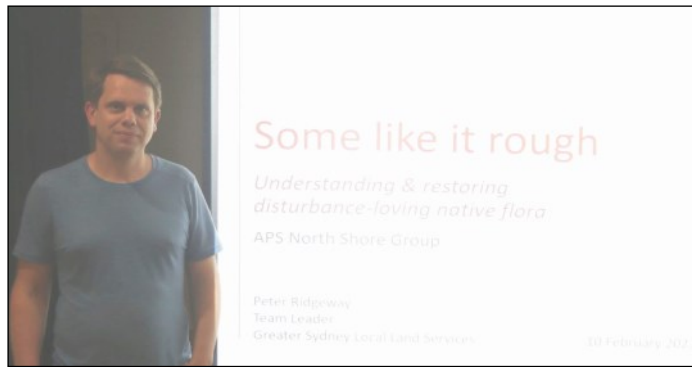


Image by Phillip Grimm

This is reflection by Jan Williamson on Peter's talk and doesn't attempt to cover all the material that Peter presented.

Peter's book *A WIDE & OPEN LAND Walking the last of Western Sydney's Woodlands* is available to give people a comprehensive understanding of this area.

Another year and we got off to a flying start with a most informative and challenging talk by Peter Ridgeway. Peter has developed a deep love and

knowledge of the Cumberland Plain and its vegetation over many years. Most of our group are very familiar with the native vegetation of sandstone country, but the Cumberland Plain is a very different area with a very different ecosystem. Most paintings of the Sydney area since white settlement have been of sandstone country so it is more difficult to envisage what the plains landscape looked like pre 1788.

#### Background information

Cumberland Plain Woodland is the name given to the ecological community in the Sydney Basin bioregion associated with clay soils derived from Wianamatta Group geology, or more rarely alluvial substrates, on the Cumberland Plain, a rainshadow area to the west of Sydney's Central Business District. The mean annual rainfall of this area is typically in the range of 700-900 mm, and is generally lower than that received on more elevated terrain that partially surrounds the Plain. The community typically occurs on flat to undulating or hilly terrain up to about 350 m elevation but may also occur on locally steep sites and at slightly higher elevations. Cumberland Plain Woodland is characterised by the assemblage of species listed in paragraph 3 and typically comprises an open tree canopy, a near-continuous groundcover dominated by grasses and herbs, sometimes with layers of shrubs and/or small trees. Shrubs may sometimes occur in locally dense stands. Less disturbed stands of the community may have a woodland or forest structure. Small trees or saplings may dominate the community in relatively high densities after partial or total clearing, and the groundcover may be relatively sparse, especially where densities of trees or shrubs are high. The community also includes 'derived' native grasslands which result from removal of the woody strata from the woodlands and forests.

Ref: <https://www.environment.nsw.gov.au/topics/animals-and-plants/threatened-species/nsw-threatened-species-scientific-committee/determinations/final-determinations/2008-2010/cumberland-plain-woodland-critically-endangered-ecological-community-listing>

Peter spoke on several species endemic to Cumberland Plain: refer to PlantNETsite <https://plantnet.rbg Syd.nsw.gov.au/> for descriptions :

*Pimelea spicata*

*Persoonia nutans*

*Micromyrtus minutifolia*

*Grevillea juniperina subsp.juniperina*

*Cassinia sifton*

*Vittadinia muelleri*

*Maireana microphylla*

All these species need land free of trees and shrubs so that they get plenty of sunlight. Fire and trail/soil disturbance may sometimes create suitable conditions for these plants. Efforts are being made to preserve the habitats required for their survival and proliferation. It was encouraging to hear that Shane's Park Reserve in the Blacktown area is doing well. Peter led us on a walk there several years ago.

Good and bad disturbances occur, though the new airport and new housing developments are causing significant bad disturbance. The Cumberland Plain area has been heavily cleared since 1788 so much has changed in flora and fauna and general environment. Urban heat from concreted areas is now a very significant concern.

In the past emus are thought to have been important contributors to the Cumberland Plain ecosystem. Browsers, such as swamp wallabies and possums are important to this vegetation and do not group in large mobs.

Wallaroes and kangaroos are grazers of plants and prefer grass species.

It is planned that at least one group outing this year will be to the Cumberland Plain area. Details will be in

*Blandfordia*.

Thanks to Peter for his talk and his conservation efforts.

Written by Jan Williamson

## Berowra Fauna Fair

Friends of Berowra Valley, a community group committed to conservation and advocacy for our local environment, will be running the Berowra Fauna Fair. Bigger and better than ever and with the support of Hornsby Shire Council we will be celebrating all of the marvellous wildlife with whom we share our bushland home.

On Sunday the 12<sup>th</sup> March from 10am to 4pm, at the Berowra Community Centre we will commence with a Welcome to Country and smoking ceremony by Uncle Laurie. The centre will be a hub of fauna based activity including native animals, information from wildlife rescue, local plants for sale, a workshop on building a bee hotel and a BBQ run by Apex. From 2pm to 4pm Australian Wildlife Displays will be bring a live Ringtail possum, Tawny Frogmouth, Bluetongue Lizard, Green Tree Frog, Diamond Python, Lace Monitor and a Long-necked Turtle. There will be insect displays and displays from Birdlife Australia.



Superb Lyrebird (*Menura novaehollandiae*)

Throughout the event there will be continuous 30-minute talks by experts on bats, birds, frogs, fungi, marine animals, platypus, koalas and more. There will be plenty of opportunity to share experiences and ask questions, or just to sit back and learn something new.

The greater Hornsby area is a native animal hot spot and home to some of Australia's most iconic animals such as the echidna, and threatened species such as the platypus and koala. Learning about these animals is a great step towards making sure they are still here for future generations to enjoy.

The Berowra Fauna Fair is a celebration of our native wildlife, but importantly is also an opportunity to make new partnerships with people who care for our native plants, animals and the ecosystems that support them. With support from a Hornsby Shire Council's Event Grant and participation by the Frog and Tadpole Study Group of NSW, the Cattai-Hills Environment Network, the Australian Plants Society and Sydney Wildlife Rescue, Friends of Berowra Valley invites everyone to come and enjoy the fun and learn how to protect our beautiful environment.

Keep an eye on <https://www.friendsberowravalle.org.au/2023-berowra-fauna-fair> to see the schedule of talks and the full list of events on the day.

### GROUP ACTIVITY for MARCH

The planned garden visit on 12 March has had to be cancelled. Instead two exciting options are available to members.

**Sat 11 March APS NSW Quarterly meeting** hosted by Sutherland group and held at Bundeena March Full details <https://austplants.com.au/event-5075009?CalendarViewType=1&SelectedDate=3/1/2023>

### Sunday 12 March Berowra Fauna Fair

A warm welcome to Ingrid S, our newest member. We look forward to meeting you and sharing in our knowledge and enjoyment of our native plants.

**2023 Activities** : SEE <https://austplants.com.au/North-Shore>

**MONTHLY GENERAL MEETING** with guest speaker 10 March *see page 2*

**WALKS & TALKS 2022** is held at Ku-ring-gai Wildflower Garden (KWG) 420 Mona Vale Rd, St. Ives

**MONTHLY GROUP ACTIVITY Saturday 11 March** APS NSW Quarterly meeting at Bundeena (see above) **&/or**

**Sunday 12 March** Berowra Fauna Fair (see above)

**PROPAGATION** is held at KWG on alternate Wednesdays from 1-4pm **8 & 22 March**, 5 & 19 April

**THE KNOLL** The Knoll is a display garden at KWG. Twice monthly maintenance activity

**PLANT SALES** and growing advice at our shadehouse (with white roof) at KWG (behind Visitors' Centre & KWG Nursery) on propagation afternoons every 2nd Wednesday (weather permitting) (cash only).

**FLOWER DISPLAY** at KWG Visitor Centre

**BUSHCARE** (KC) in KWG on alternate Wednesdays from 9am-12pm: **1, 15 & 29 March** 12 & 26 April from 9am -12pm





*Buckinghamia celsissima* or Ivory Curl Tree in flower,  
(another find on dog walk:  
Close up image to right.  
Jan W



Jan W has been super pleased to see leaf tailed geckos in three different local environments lately. Surely a good sign of the health of the environment.

#### REMINDER

#### Suggestions for speakers at the general meetings .

If you know of anyone, or hear of anyone who you think would have a topic/ presentation suitable for our group please contact Jan Williamson on [janw7531@gmail.com](mailto:janw7531@gmail.com)

#### Committee Contacts

[northshore@austplants.com.au](mailto:northshore@austplants.com.au)

#### President:

Sue Bowen 0478 957 951

**Website:** <https://austplants.com.au/North-Shore>

**Treasurer:** Helen Ray  
[treasurer@blandfordia.org.au](mailto:treasurer@blandfordia.org.au)

**Newsletter Editor:** Jan Williamson  
9875 2262 [janw7531@gmail.com](mailto:janw7531@gmail.com)

The preferred method for Membership Applications & Renewals is to go to the APS NSW website and follow the instructions at <https://austplants.com.au/about-membership>

If joining or renewing online presents any problems assistance can be given by emailing your query to [northshore@austplants.com.au](mailto:northshore@austplants.com.au)

**Are you in a joint membership of APS NSW?**  
Would you prefer to use separate email addresses and/or contact numbers? This arrangement would mean that you each receive electronic communications, e.g. *Blandfordia*. This can be arranged by contacting Merle Thompson  
[apsnswmembership@gmail.com](mailto:apsnswmembership@gmail.com)

#### February 2023 Committee Meeting Notes

- Meetings and speakers 2023
- 2023 committee unfilled positions
- Plant label machine
- Plant & card sale at Berowra Fauna Fair 12th March
- Ways to encourage new members
- APSNSG website and generic contacts
- The Knoll new "community garden" arrangement
- Drainage issues around sheds at propagation area

#### Do you want to know more about native plants?

Have you tried <https://austplants.com.au/> and within that site <https://resources.austplants.com.au/plant-database/> ?

#### More plants for sale

**Brian Roach** (APS NSG member) at Westleigh Native Plants  
Contact [westleighnativeplants@gmail.com](mailto:westleighnativeplants@gmail.com)

#### 2023 Activities CONTACTS

<b>Walks and Talks at KWG</b>	Wendy Grimm	0419 323 035
<b>Propagation at KWG</b>	Tania Lamble	0415 043 671
<b>Bushcare at KWG</b>	Sue Bowen	0478 957 951
<b>The Knoll</b>	Wendy Grimm	0419 323 035
<b>Flower Display at KWG</b>	Jan Marshall	0403 908 042

**Newsletter submissions:** Deadline for submissions is the third Friday of the month.  
For the April 2023 edition is Friday 17<sup>th</sup> March 2023 Editor: [janw7531@gmail.com](mailto:janw7531@gmail.com)

***Blandfordia*** *The Newsletter of the Australian Plants Society North Shore Group*