

Blandfordia



North Shore Group
(ABN 87 002 680 408)

JANUARY 2024

President's Message

I hope everyone had a wonderful Christmas and is full of energy for this year!

Our Christmas party was most enjoyable and it was a pleasure for me to run a plant identification quiz and provide everyone with plants to take home with them.

Our program for this year kicks off with a rather provocative talk at our meeting on Friday 9th February. David Roberts, a member and bush regenerator, will enthral us with: *Hazard Reductions and the effect on Native plants and weeds - Do we need to use flame in our native Gardens?*



Isotoma axillaris

We are hosting the APS NSW quarterly gathering on Saturday 9th March at Caleys Pavilion, Ku-ring-gai Wildflower Garden. We will run walks, have plants and cards for sale and Heather Miles, our past APS-NSW President, will talk about garden design. All members are welcome!

Finally, I can recommend two small herbs for sunny rockeries, containers and native cottage gardens. Both happily spread themselves around the garden (and between the pavers in my paths) and flower prolifically. *Bulbine semibarbata*, or native leek, is an

annual, while *Isotoma axillaris*, or rock Isotoma, is a perennial. The Isotomas are so favoured by our local blue banded bees that I see them visiting every isotoma flower in my garden many times a day.



Bulbine semibarbata

PLEASE COME and JOIN AN ACTIVITY

Sue Bowen

WELCOME

A BIG welcome to our newest members: Paul K., Roger (in Florida USA) and Li-fen.

We hope that you have an informative and enjoyable relationship with our amazing flora, APSNSW and our group.



February 2024 APS NSG General meeting & AGM

Friday 9th February 2024

7.30 pm for 8pm

Beatrice Taylor Hall

25 Edgeworth David Ave, Hornsby NSW 2077

Speaker: **David Roberts**

Topic: **Using fire in our native gardens**

Background: David has worked as a professional Bush Regenerator for the past 4 years after transferring from a 30-year career in IT. David wanted an outside job that didn't involve staring at a computer screen. David has also been a volunteer bush firefighter for 20 years.

This month's talk is in response to noticing the regeneration of bush that has had a Hazard reduction. Can we take these effects and use them in our native gardens? Including direct fire, smoke water and BBQ

Secondary short talk by **Bob Failes on Plant Names**

Next meeting Friday 8th March 2024 Topic: TBA

Flower display at Ku-ring-gai Wildflower Garden



Passing the baton and an opportunity to enjoy the outdoors and learn more about Australian native plants.

From Jan Marshall

I have decided to hand over the role of convenor of the Flower Display at KWG at the end of January 2024.

I have very much enjoyed my time as convenor (most of the time), I have learnt such a lot. The success of the display would not be possible without the dedication of all the volunteers that have worked with me over the years, the help, knowledge and friendship that they have given me has been wonderful.

I started to help with the display in 2007, the reason being, I had just arrived from England and I was interested to learn about Australian native flowers. At W&T sessions, I noticed the flower display and when they asked for volunteers, I offered to help. Margarita Clayton took me under her wing and encouraged me to learn more. When Margarita retired as convenor of the display Wendy asked me to take over. It was definitely a case of learning on the job, but I am still learning about the amazing variety of species that we have growing in KWG.

I will still help as one of the volunteers but I know that the display will continue to flourish in the capable hands of Gillian. Jan M

BIG thanks to Jan for her dedicated contribution to APS NSG for her work in this role.

From Gillian Gutridge

The Flower Stand at Ku-ring-gai Wildflower Garden, St. Ives outside the Visitors Centre is maintained by volunteers of the APS North Shore Group. For about 2.5 - 3 hours a month, in groups of 2, we collect a sample of what is flowering in the Gardens and display them in the stand. Currently we are in need of a few more volunteers. It is a really good way to learn about the native plants in this area - you do not need to be an expert to join us. If anyone is interested please contact Gillian Gutridge at gillian.gutridge@gmail.com.
Phone: 0421 061 345



Gillian G

Walks and Talks at Ku-ring-gai Wildflower Garden recommence on Monday 18 March 2024 with monthly walks

Save the date: for full details see March 2024 *Blandfordia*

March 18 Monday Gum trees along the Solander Trail
 April 29 Monday Bush foods & fibres
 May 13 Monday Creative look at the bush

Leader: John
 Leader: Wendy
 Leader: Margo



A sculpture of a goanna was featured in December 2023 *Blandfordia*. Wendy managed to capture an image of the real thing at KWG.

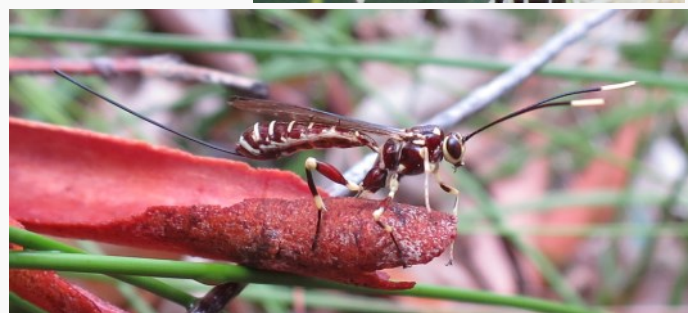


Meanwhile Phillip Grimm “captured” John and Bob on the Solander Trail, KWG. Bob is in the “easy to spot” rain coat.



Wendy Grimm also captured images of several insects—maybe not, initially, as impressive as a large goanna, but still vitally important in terms of biodiversity and healthy ecosystems.

At the Quarterly APS NSW meeting to be held on Saturday 9th March at KWG there will be a Spider and Insect Walk.



TWO PLANT & CARD SALES OPPORTUNITIES

HELPERS NEEDED

1. APS NSW Quarterly Meeting 9th March 2024 at KWG , hosted by **APS NORTH SHORE GROUP**

Native garden design workshop - design or trial and error?

Hosting the event means that **we need helpers** to move plants to Caley’s Pavilion, set up and sell plants and cards, welcome visitors and assist with tea and coffee and afternoon tea. Members of the hosting group provide the afternoon tea. Helpers, please let Sue Bowen suzanneebowen@gmail.com know of your availability.

These events are a good chance to meet new like minded people and tap into their vast knowledge and experience.

See page 4 for full details

2. **Berowra Fauna Fair on Sunday 17th March** at the Berowra Community Centre, The Gully Road Berowra, between 10am and 3pm

APNSW Quarterly Gathering Cost: \$5 to cover the cost the hall hire and afternoon tea.

Program:

11am-12 noon - meet at Cayley's Pavilion Ku-ring-gai Wildflower Garden 420 Mona Vale Road, St Ives 2075

- Choice of two walks:
- Spider and insect walk around the gardens with Helen Smith, or
 - Walk around the garden to visit the threatened plant species in the garden.

12 noon -1 pm Lunch

Bring your own lunch and enjoy it with your friends and fellow native plant enthusiasts at Caley's Pavilion, where tea and coffee will be available.

A wonderful selection of native plants and beautiful handmade cards, by Jim and Pam Lawler featuring native plants, birds and animals, will be for sale at the Pavilion.

1-2 pm Presentation/ Workshop with Heather Miles

Native garden design workshop - design or trial and error?

If you are planning a new native garden, revamping an existing one or transitioning an exotic garden to natives, then this is the workshop for you. We will explore how to apply 'design' to each of these situations with examples and hands on practice. If you have a spot in your garden that you want to redesign, bring along a map of it and we will play with ideas. She will bring some other examples to give your imagination free rein!

Heather will also share with us how the Garden Design Study Group website on the ANPSA site is being updated to make the information more interesting and accessible.

Heather is an excellent speaker with a passion for Australian native plants and their use in garden design. In addition, she is an excellent photographer and her photographs of plants and flowers will enhance her presentation.

Heather's talk will be followed by afternoon tea.



Repeating this information again as it is IMPORTANT

PLEASE Please Please have a look at this link
<https://www.austplants.com.au/Health-and-safety>

To act proactively against all these possibilities APS NSW has gone to a lot of trouble to develop a comprehensive set of guidelines for all members outlining **Health & Safety Issues** and how to address them. Insurance coverage is dependent on our compliance. Some forms DO need to be filled out.

How to find these guidelines: APS NSW home page
<https://austplants.com.au/> and then go to ABOUT US and then go to HEALTH AND SAFETY or go directly to this page
<https://www.austplants.com.au/Health-and-safety> .

It shows **policy, procedures and forms**.

This includes the forms that need to be filled out **PRIOR TO** any APS activity. It also includes forms that need to be completed should any incident occur.

PLEASE look at this site and help to keep us all out of harm's way.

Jeff Howes reporting in:

Just spent a week on Norfolk Island (recommended) and I came across this 140 year old tree, *Ficus virens*. It is one of the rare deciduous trees in the tropical low-land rainforest. It is found in Pakistan, India, southeast Asia, through Malaysia and into Northern Australia. Its common name is white fig, and like many figs, its fruits are edible.



One of the most famous specimens of this tree is the Curtain fig tree of the Atherton Tablelands near Cairns.

<https://visitathertontablelands.com/atherton-tablelands-things-to-do/curtain-fig-tree/>

F. virens var. *sublanceolata* occurs the subtropical rainforest of northeastern NSW and SE Queensland.

2024 Committee

| | |
|------------------------------------|---|
| President | Sue Bowen |
| Vice president | <i>not filled</i> |
| Correspondence secretary | Tania Lamble |
| Minutes secretary | Jan Williamson |
| Treasurer | Helen Ray |
| Conservation officer | <i>not filled</i> |
| Membership officer | Narelle Barden |
| Assistant membership officers | Genevieve Meares, Helen Ray, Sue Fredrickson |
| Excursions co-ordinator (i) walks | Sue Fredrickson |
| (ii) garden visits | <i>not filled</i> |
| Health and Safety officer | <i>not filled</i> |
| Publicity officer | <i>not filled</i> |
| Delegate to APS NSW | <i>not filled</i> |
| Web master | Helen Smith |
| Newsletter editor | Jan Williamson |
| General Committee members | Helen Smith, Hugh Jones, Wendy Grimm |
| Coordinator of Speakers' Programme | Jan Williamson |
| <u>Non committee positions</u> | |
| Walks and Talks coordinator | Wendy Grimm |
| Val Williams Scholarship Convener | Tania Lamble |
| Flower display stand KWG | Gillian Guttridge |
| Propagation coordinator | Tania Lamble |
| The Knoll coordinator | Wendy Grimm |
| Librarian | Lyn Kirby |
| Bushcare | Sue Bowen |

A **BIG** thanks to Rae Rosten, Bill Jones and Judy Jeffery for all their dedicated contributions to committee and APS NSG over many years.

Note: If you would like to fill one of these positions or are interested in being a general committee member please contact Sue Bowen.

Southern Tablelands Get-together 18-19 November 2023

A snippet from the talk on *Eremophilas* by Sue Fredrickson

Dr Lyndal Thorburn, leader of the ANPSA *Eremophila* Study Group gave an excellent talk on, you guessed it- *Eremophilas*!

Although *Eremophilas* in general are an arid area species, Lyndal gave some tips for growing these beautiful plants in coastal places, although that does not include in areas of salt spray.

- Go for the green leaved species, not the grey often hairy ones
- Good air circulation is required. Raised beds help. Sun or semi-shade preferred.
- If bits start to go mouldy, just remove them.
- New hybrids are being developed for us to try and they often have more growing vigour.

Newsletters of the *Eremophila* Study Group are available on the ANPSA website.

<https://resources.austplants.com.au/stories/study-group-updates-april-dec-2023/>

There are very many different flower colours. Some are bird pollinated and are often the red ones and the flowers appear "upside down" because the birds hover.

Insect pollinated flowers appear the right way up due to there being a platform for them to land on. Isn't nature wonderful!

I recently read Dorothea Mackellar's poem *The Colours of Light* and thought that it captured very evocatively the Australia bush that we all love.
Jan Williamson
<https://allpoetry.com/The-Colours-Of-Light>



Corymbia ficifolia, WA flowering gum Image by Jan Williamson

Angophora costata
Image by
Steve Williamson



2024 Activities :

SEE <https://austplants.com.au/North-Shore>

MONTHLY GENERAL MEETING with guest speaker

WALKS & TALKS 2024 is held at Ku-ring-gai Wildflower Garden (KWG) 420 Mona Vale Rd, St. Ives Resuming with walk only on Monday 18th March see page 3

Enquiries Please contact Wendy Grimm 0419 323 035

MONTHLY GROUP ACTIVITY 9 March 2024 hosting Quarterly APS NSW Gathering at KWG see page 3
April 2024 Working bee at shed and shadehouse KWG

PROPAGATION is held at KWG on alternate Wednesdays from 1-4pm **7 & 21 February** and **6 & 20 March**

BUSHCARE 14 & 28 February and **13 & 27 March**

THE KNOLL APS NSG Native Plant Community Garden at KWG Please contact Wendy Grimm 0419 323 035

PLANT SALES and growing advice at our shadehouse (with white roof) at KWG (behind Visitors' Centre & KWG Nursery) on propagation afternoons every 2nd Wednesday (weather permitting) 1-4pm

2024 Activities

CONTACTS

| | | |
|-------------------------------|------------------|--------------|
| Walks and Talks at KWG | Wendy Grimm | 0419 323 035 |
| Propagation at KWG | Tania Lamble | 0415 043 671 |
| Bushcare at KWG | Sue Bowen | 0478 957 951 |
| The Knoll | Wendy Grimm | 0419 323 035 |
| Flower Display at KWG | Gillian Gutridge | 0421 061 345 |

Venues for plant sales

The committee is keen to hear of other community events which may be suitable for us to contribute to with plant sales. Propagation and plant sales are very important activities for APS NSG. The money raised is vital to fund the annual Val Williams Scholarship.

If you have any suggestions please contact Sue Bowen 0478 957 951 or Tania Lamble 0415 043 671

Committee Contacts

northshore@austplants.com.au

President:

Sue Bowen 0478 957 951

Website: <https://austplants.com.au/North-Shore>

Newsletter Editor: Jan Williamson
9875 2262 janw7531@gmail.com

The preferred method for Membership Applications & Renewals is to go to the APS NSW website and follow the instructions at <https://austplants.com.au/about-membership>

If joining or renewing online presents any problems assistance can be given by emailing your query to northshore@austplants.com.au

Are you in a joint membership of APS NSW?

Would you prefer to use separate email addresses and/or contact numbers? This arrangement would mean that you each receive electronic communications, e.g. *Blandfordia*. This can be arranged by contacting Merle Thompson apsnswmembership@gmail.com

January 2024 Committee Meeting Notes

- APS NSW Quarterly Gathering hosted by APS NSG 9 March 2024
- 2024 Committee
- Flower Display at KWG
- Plant and card sales: venues and opportunities
- Speakers Programme
- W&T
- Working bee at KWG APS NSG shed in 2024

More plants for sale

Brian Roach (APS NSG member) at Westleigh Native Plants
Contact westleighnativeplants@gmail.com

Do you want to know more about native plants?

Have you tried <https://austplants.com.au/> and within that site <https://resources.austplants.com.au/plant-database/> ?

Newsletter submissions:

Deadline for submissions is the third Friday of the month.
For the March 2024 edition is 16th February 2024
Editor: janw7531@gmail.com

Blandfordia *The Newsletter of the Australian Plants Society North Shore Group*